

INDOOR AIR QUALITY AND HUMIDITY SENSORS

by NEXELEC

The life of the sensors and the sealed lithium batteries can last up to 10 years depending on the radio protocol and the operating environment.

INSTALLATION MANUAL & USER MANUAL



HUMIDITY SENSOR

Temperature and Humidity sensor



INDOOR AIR QUALITY SENSOR

Carbon dioxide / Temperature sensor

Read this manual prior to use.

Keep the documentation provided with the product for its entire life cycle.

VMI® - NEXELEC range correspondence :

VMI® range	NEXELEC range
Humidity sensor	INSAFE+ Pilot
Indoor air quality sensor	INSAFE+ Carbon

- INSAFE+ Pilot and INSAFE+ Carbon devices comply with:
 - The Radio Equipment Directive (RED) 2014/53/EU
 - Directive (RoHS) 2011/65/EU
 - The full text of the EU declaration of conformity can be found on the website www.nexelec.fr
- Dimensions: 105x105x30 mm
- Protection rating: IP40
- Storage and operating temperature between 0°C and +50°C
- Relative humidity: 0% - 95%
- These devices are designed to be used in an indoor environment.
- Recurrent and/or extended use in an exceptional environment could reduce the life of the battery, and therefore that of the sensor.

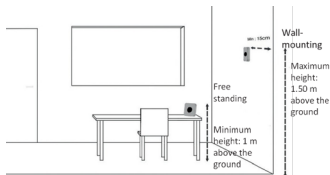
Protocols	Radio frequencies
EnOcean	868MHz : Europe (EN300-220)

INSTALLATION LOCATIONS

Preferred locations within a domestic or office environment

Sensor installation recommendations:

- At least 1 metre above the ground
- Maximum 1.5 metres above the ground if the sensor is wall-mounted (attached with screws and anchors)
- To obtain data as close as possible to the user, we advise sticking to the recommended locations



Indoor Air Quality sensor

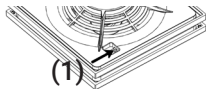
Locations to avoid

Do not install the indoor air quality sensor:

- Less than 30 cm from the ceiling
- Outside
- In an area where the temperature is below 0°C or above 50°C

- In an area where the humidity is greater than 95%
- In a dusty or dirty area (garage, workshop, etc.)
- Less than 1 m from any doors and windows, or any heating, cooling or air vents
- In a walkway where it could get damaged
- In a confined space (for example, in a cupboard or behind a curtain)
- In an area where it could be obstructed (for example by furniture)

SETTING UP THE SENSOR



- Push the single-use switch to start up your sensor (1).
- If the product is operating correctly, the LED will flash green-orange-red for 10 seconds.
- The green LED will then flash approximately every 20 seconds during the set-up phase, which can last up to two minutes. The green LED will come on steady for 5 seconds when the set-up phase is over.

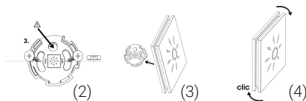
ATTACHING THE SENSOR TO A WALL

- Use the support base and the screws and anchors provided with the sensor.
- If necessary, the attachment kit with the

screws and anchors can be replaced with an INSAFE Fix attachment (option).

APPLY THE FOLLOWING PROCEDURE:

- Select a suitable location on the wall to attach the sensor.
- Remove the support base from the sensor.
- Indicate where the screw holes need drilling on the wall using a pencil. Refer to the drawing inside the base for the final position of the sensor when clipped in position (2).
- Insert the nylon anchors provided and screw on the attachment base (3).
- Place your sensor on the attachment base and then rotate right by a quarter turn to clip in position. You should hear a click, indicating that your sensor is correctly attached to its base (4).
- Check that your sensor is securely wall-mounted.



PRECAUTIONS AND OPERATING LIMITS OF THE SENSOR

Do not install the sensor in any of the locations described in the «Locations to avoid» section.

- Do not paint or cover the sensor.
- Do not block the sensor openings.
- Do not disassemble, modify or damage the sensor.

The sensor is designed to last for up to 10 years and provide temperature, humidity, CO₂ (INSAFE+ Carbon model only) and air quality measurements for the entire period. Some conditions can cause damage to the sensor, reduce its sensitivity and/or the battery life and therefore that of the sensor: Do not expose the sensor to temperatures or humidity levels outside of the normal operating range. Avoid recurrent and/or extended use in this exceptional environment.

MAINTENANCE

Clean your sensor on a regular basis: Remove dust from your sensor and clean the top edges using an anti-static cloth.

SCRAPPING AND RECYCLING THE SENSOR



This symbol, which appears on the sensor and its packaging, indicates that the product must not be disposed of with household waste, as per the European Directive 2002/96/EC on Waste Electrical and Electronic Equipment (WEEE).

The sensor must be taken to a suitable collection point for the recycling of electrical and electronic equipment. Comply with National laws on waste disposal.

Your cooperation will help to eliminate the potential effects of dangerous substances on

the environment and human health, and boost re-use, recycling and other forms of recovery.

NEXELEC is a member of the following eco-organisation: Ecologic.

IMPORTANT: The sensor contains a lithium battery: do not throw this battery into a fire, melt or incinerate.

WARRANTY

Thanks to the NEXELEC warranty, VMI® can propose a contractual warranty for the INSAFE+ Pilot and INSAFE+ Carbon sensors throughout the European Union, covering the functions for which the device was designed, in accordance with the applicable European Directives and the regulation, for a 2-year period from the date of purchase. This warranty will not cover any damage to the sensor caused by negligence, incorrect storage conditions, incorrect handling, improper attachment, non-compliant use, incorrect maintenance, dismantling, modifications, or non-compliance with the user precautions recommended in the sensor manual. This warranty will not cover any damage caused by the use of improper fasteners or non-compliance with the installation instructions.

Given the large number of parameters with a potential effect on the quality of the sensor set-up, only the user can manage all risks faced during set-up, as such risks are difficult to predict and depend on the operating

environment. If the sensor operates incorrectly or cuts out due to clogging with dust and/or insects, despite the user maintaining the sensor as per this manual, this will be considered as normal wear to the device and will not be covered by the warranty as such incidents are difficult to predict and depend on the home environment. This warranty cannot be considered as a type of insurance. This warranty applies in addition to your statutory warranty. If the product is found to be defective, it will be replaced or repaired as per the warranty conditions mentioned in the user manual.

AFTER-SALES SERVICE

Please read the information available on the website at www.nexelec.fr/support and obtain a returns reference before requesting the application of the contractual warranty. The warranty cannot take effect without a returns reference.

If a defect is detected during the warranty period, the buyer must send the sensor to the VMI® after-sales department by post, at the following address: 16 rue des Imprimeurs, 44220 Couëron, France.

Proof of purchase, with a date, and a letter requesting the application of the warranty and explaining the defect must be enclosed with the sensor.